

### Kabliranje (Multi sistem)

**Izaberite “Kabliranje”**

**Kreiranje dijagrama kabliranja**

**Kada daljinski upravljač nije povezan označite ovaj kvadratić**

**Outdoor unit data**

Name	Comments	Refrigerant	Model	Type	Model	PS
Otdr1		R410A		2 Rooms Multi System	AOYG14LAC2	1φ, 230V, 50Hz

**Capacity**

Cooling	Heating
4.00 kW	4.40 kW

**Indoor connect count** 2

**Outdoor temp.** Cooling 35.0C Heating 7.0C

**Indoor temperature** Cooling 27.0C Heating 20.0C

**Piping**

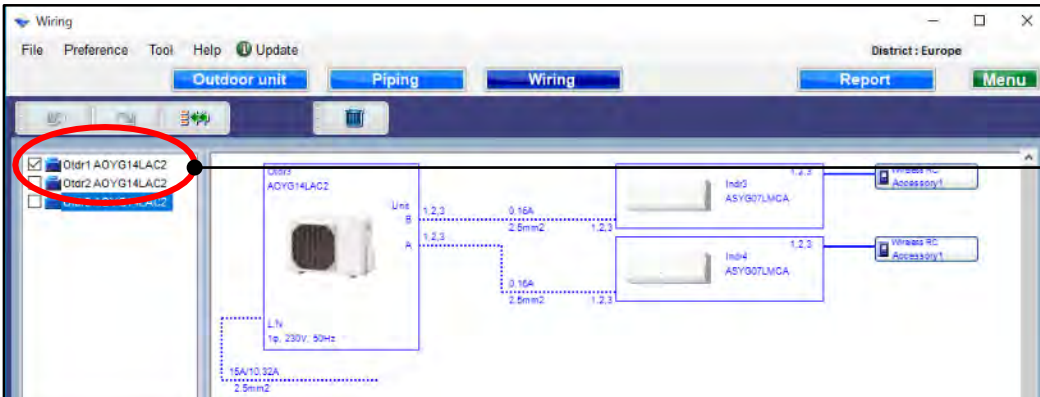
**Total pipe length** 10.0m

**Wiring**

**Options**

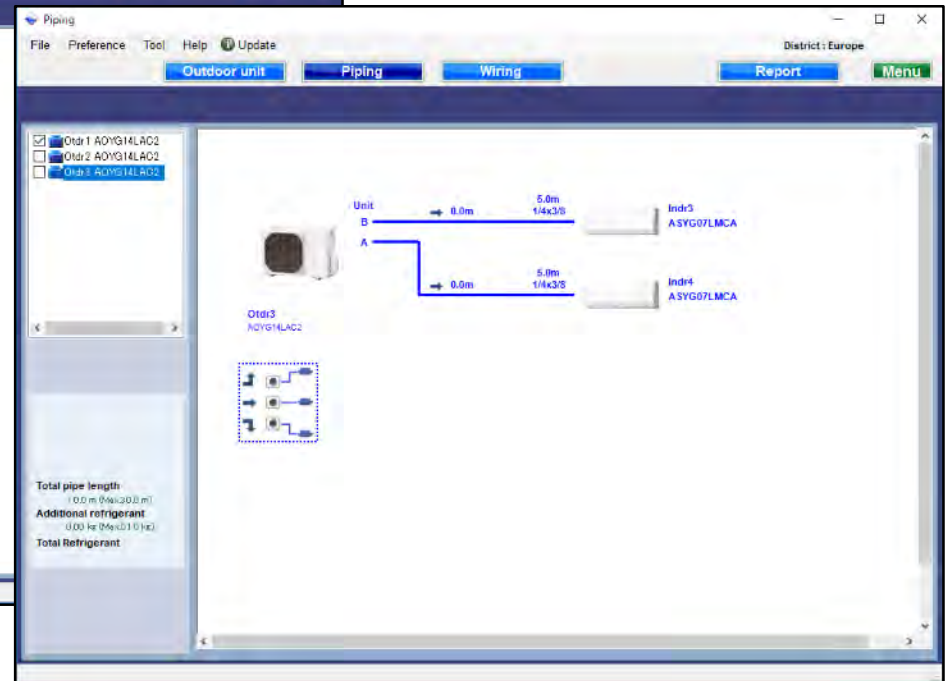
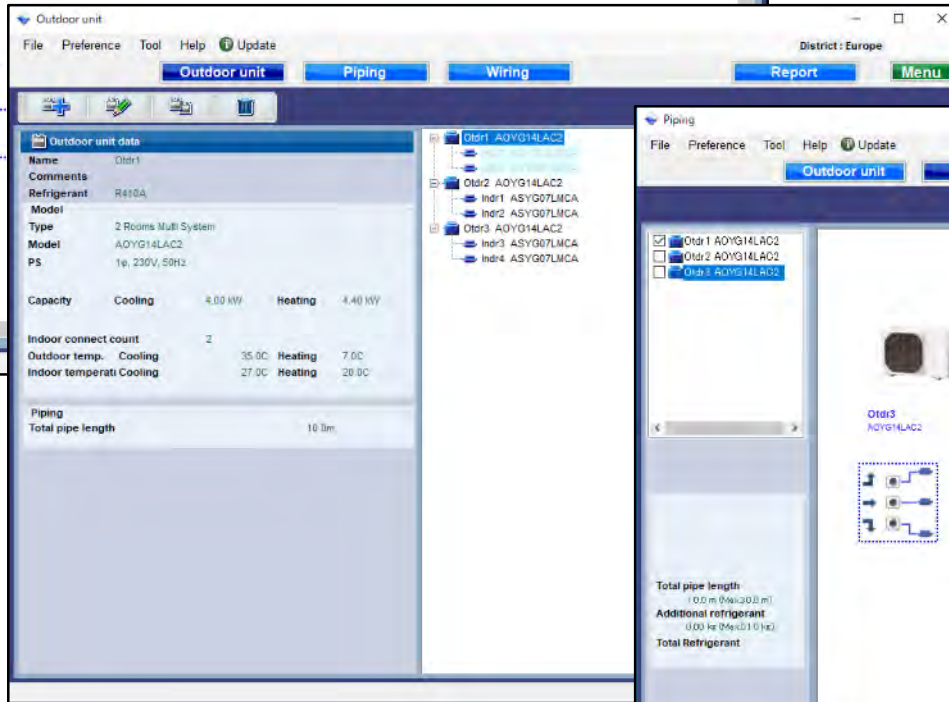
☐ I accept no remote control for indoor unit.

## Rešenje sistema rashladnog fluida (Multi sistem)



Izaberite sistem rashladnog fluida

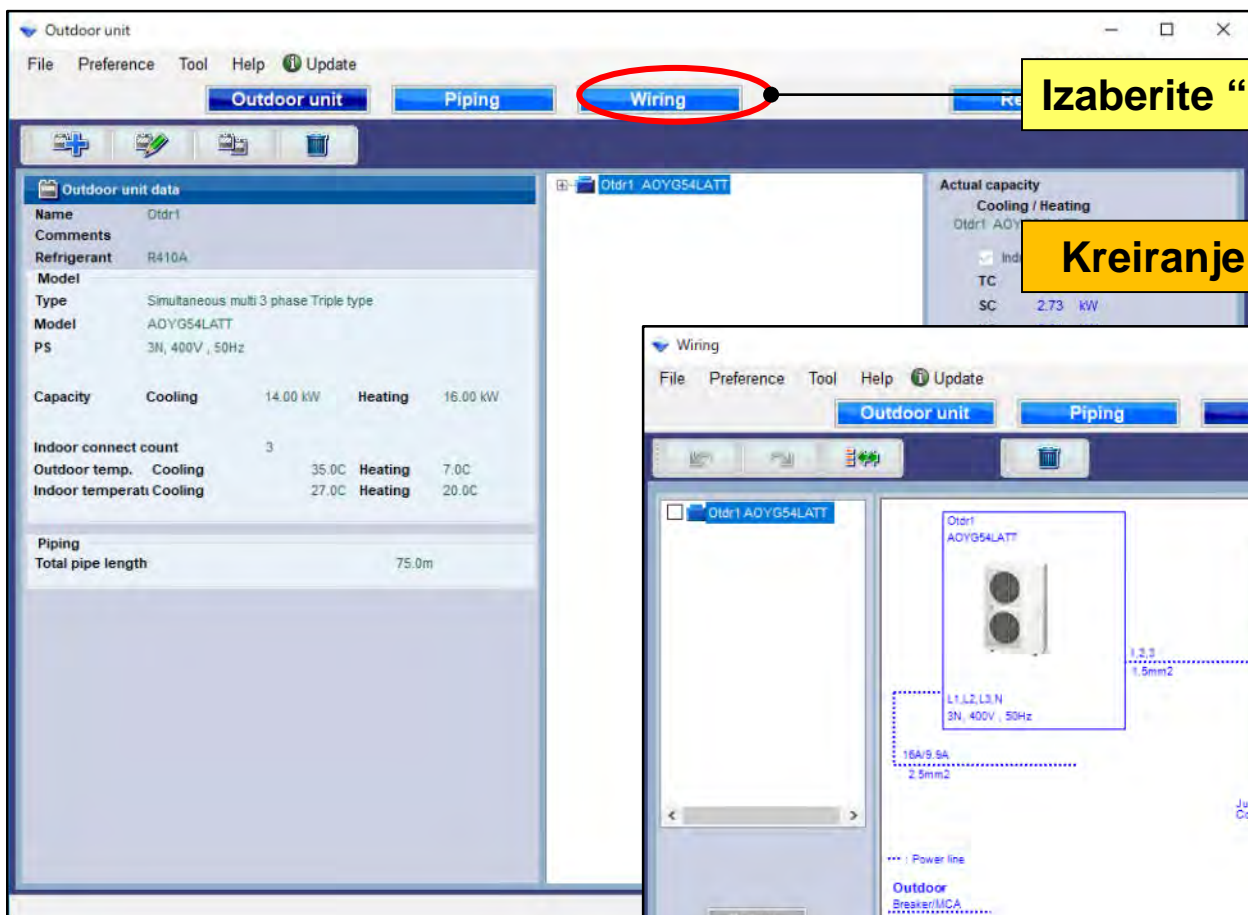
Izabrani sistem rashladnog fluida ne može se uređivati na svakom ekranu



# Podešavanje kabliranja

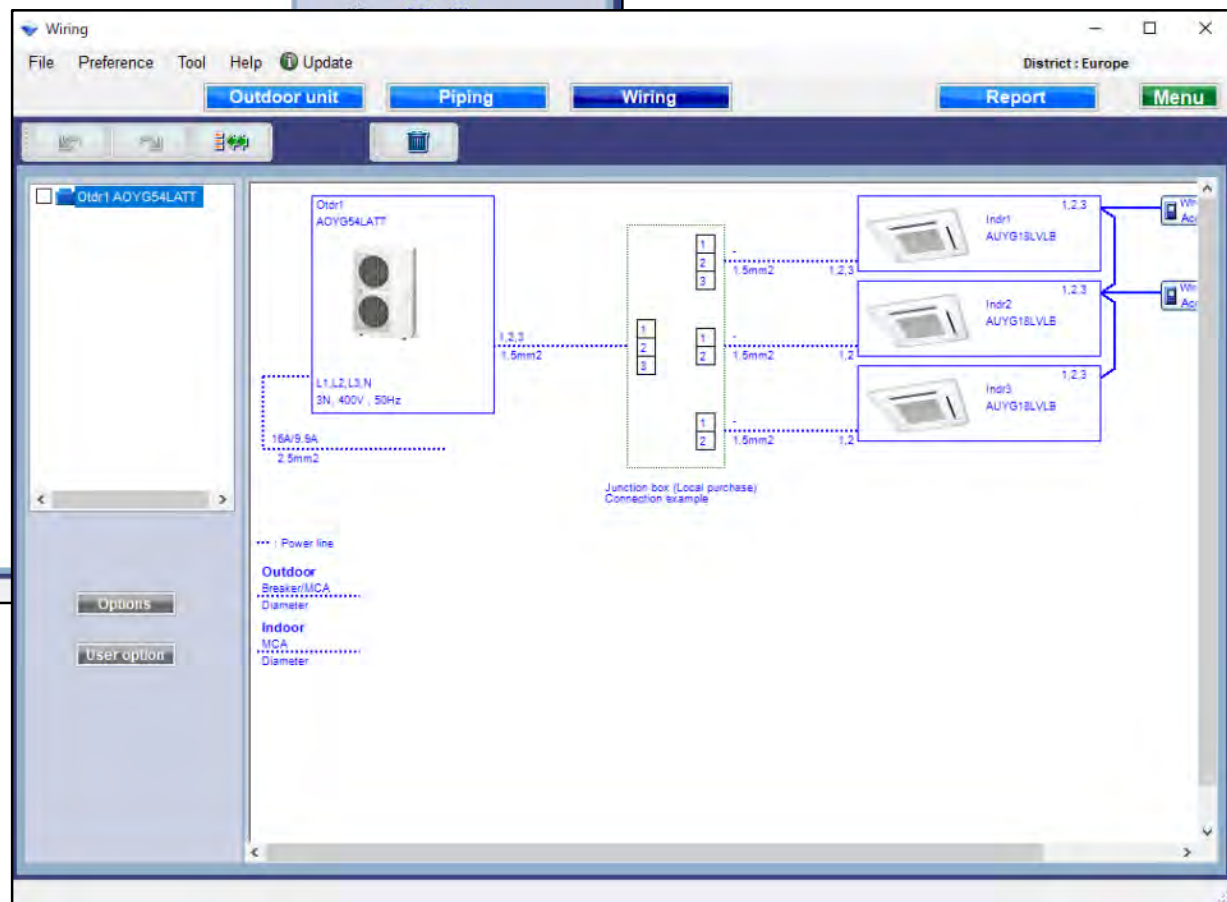
*Design Simulator*

## Kabliranje (Simultani multi sistem)

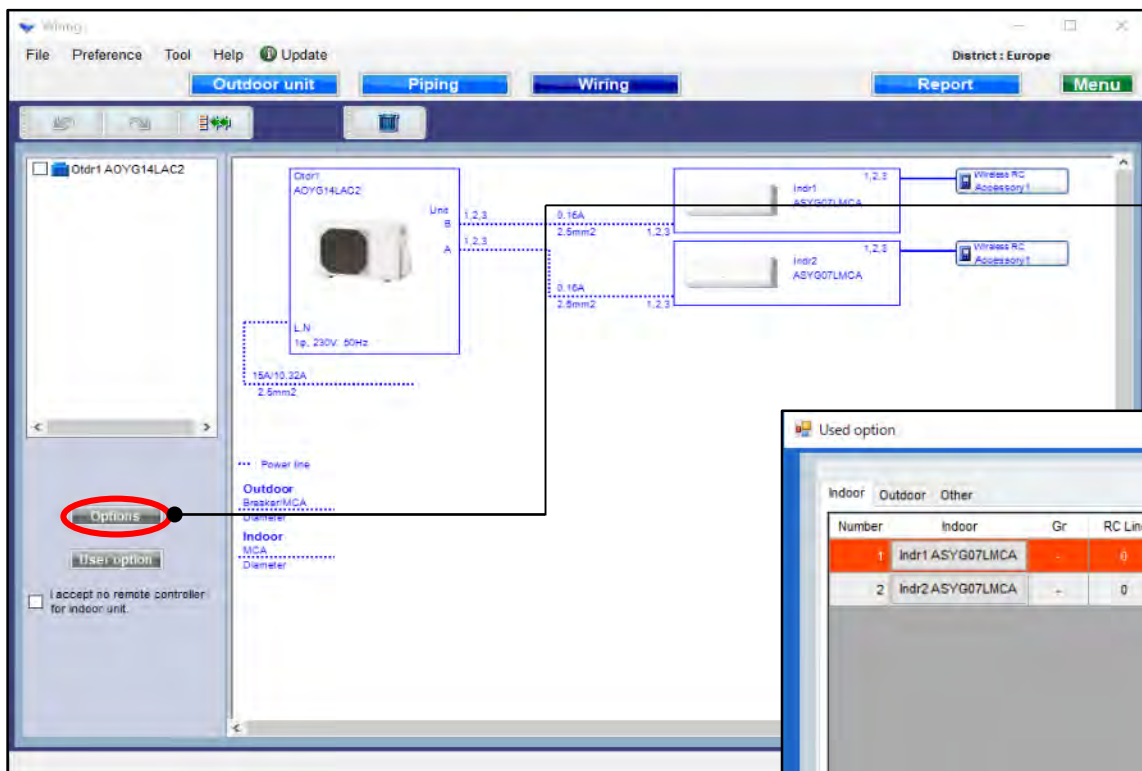


Izaberite "Kabliranje"

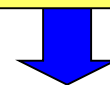
Kreiranje dijagrama kabliranja



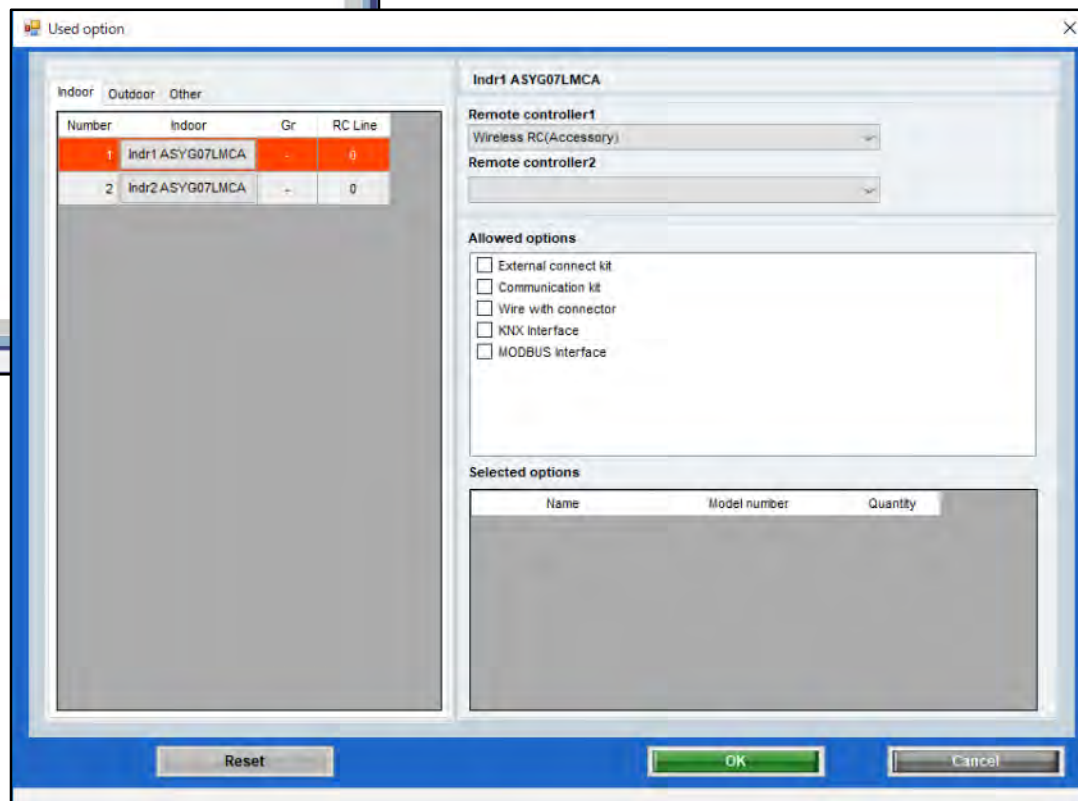
### Opcije



Izaberite "Opcije"



Otvorite ekran sa opcijama.



### Korišćene opcije(1/2)

Used option

Indoor Outdoor Other

Number	Indoor	Gr	RC Line
1	Indr1 ASYG07LMCA	-	0
2	Indr2 ASYG07LMCA	-	0

Indr1 ASYG07LMCA

Remote controller1  
Wireless RC(Accessory)

Remote controller2

Allowed options

- ☐ External connect kit
- ☐ Communication kit
- ☐ Wire with connector
- ☐ KNX Interface
- ☒ MODBUS Interface

Selected options

Name	Model number	Quantity
MODBUS Interface	FJ-RC-MBS-1	1

Reset OK Cancel

Izaberite daljinski upravljač

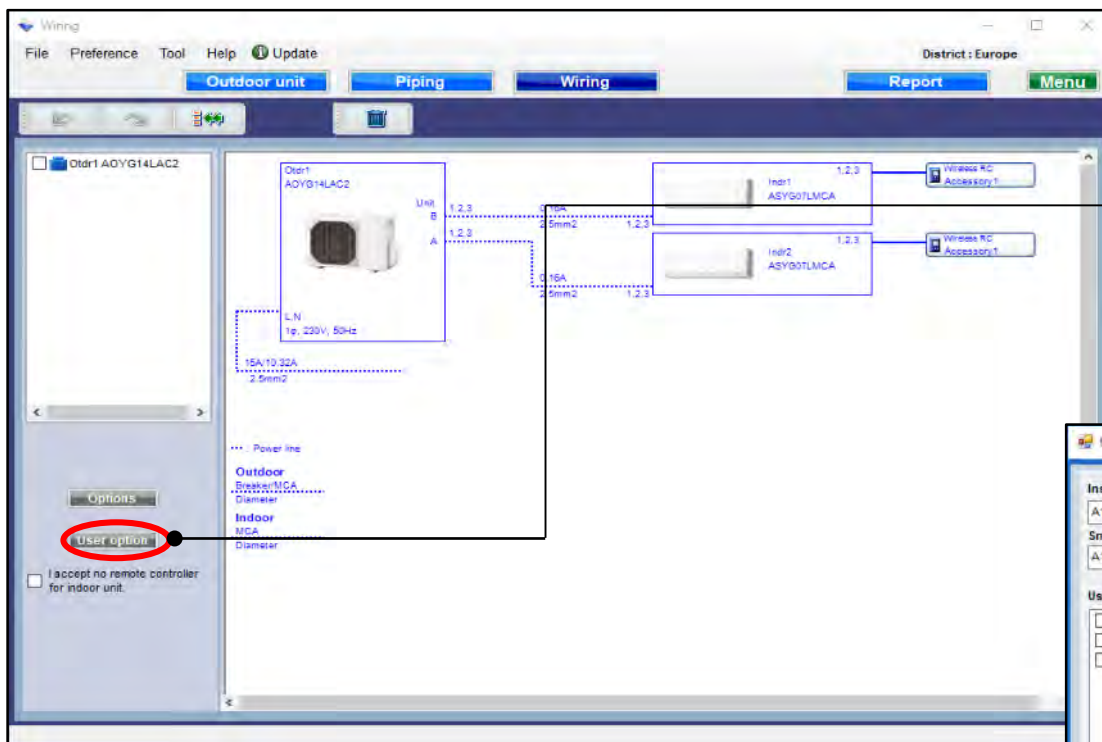
Izaberite opcione delove

Prikazan je samo model opcije koji odgovara.

Izabrane opcije su prikazane u "Izveštaju"



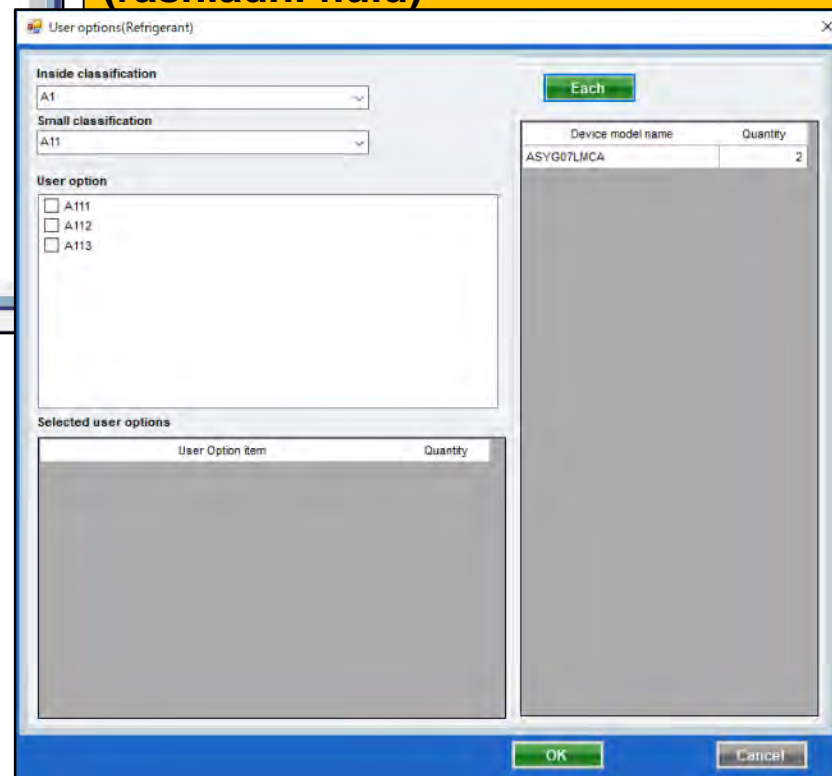
### Korišćene opcije (2/2)



Izaberite “Korisničke opcije”



Izaberite korisničke opcije  
(rashladni fluid)



### Korisničke opcije (rashladni fluid)

User options(Refrigerant)

Inside classification  
A1

Small classification  
A11

User option

☒ A111  
☒ A112  
☐ A113

Selected user options

User Option item	Quantity
A111	1
A112	1

Each

Device model name	Quantity
ASYG07LMCA	2

OK Cancel

Izaberite "Zasebno ili Grupisano"

Izaberite "Unutrašnja klasifikacija"

Izaberite "detaljniju klasifikaciju"

Izaberite "Korisničke opcije"

Izaberite "Korisničke opcije"

Izabrane opcije su prikazane u "Izveštaju"